

HOW TO INSTALL AND LICENSE FME DESKTOP

DOWNLOAD AND INSTALL FME

If not already downloaded, download the latest version of FME from:

<http://www.safe.com/downloads>



SAFE SOFTWARE

Products Why FME Learning & Support Community About  [Free Trial](#)

safe.com blog knowledge

FME Downloads

Download the latest version of FME Desktop and FME Server.

FME 2017.0 (Official Release) FME Betas

FME Desktop 2017.0.1.1*

2017.0.1.1 | released May 17th, 2017

*2017.0.1.2 | Linux-only release, June 25th 2017

 Windows

64-bit Windows FME Desktop *build: 17291*

32-bit Windows FME Desktop *build: 17291*

Learn more about the differences between 32 and 64-bit FME.

FME Server 2017.0.1.1*

2017.0.1.1 | released May 17th, 2017

*2017.0.1.2 | Linux-only release, June 25th 2017

 Windows

64-bit Windows FME Server *build: 17291*

(Engine Only, 64-bit)

32-bit Windows FME Server *build: 17291*

(Engine Only, 32-bit)

 We are currently offline

The 64bit version is recommended if your system supports it and you do not need any format which is restricted to 32bit.

If you are unsure you can check the formats available on different platforms here:

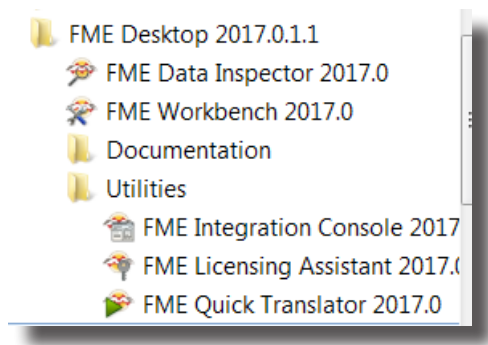
<https://www.safe.com/fme/formats-matrix/#showPlatforms=true>

Download and install the required version of FME.

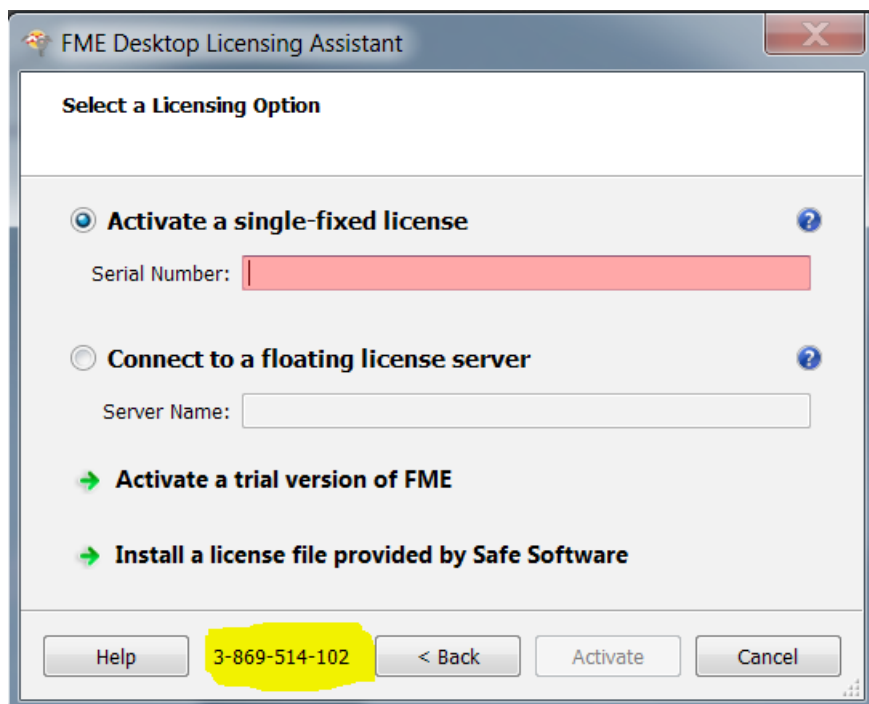


DETERMINE YOUR REGISTRATION KEY

When the installer finishes it will automatically launch the licensing wizard if not it can be found under the FME folder in the Windows Start Menu as below.



In order to request either a trial or a full license the key piece of information within in the license wizard is the Registration Code highlighted in yellow in the image below. Either make a note of this, or you can click on the value which will copy it to the clipboard.

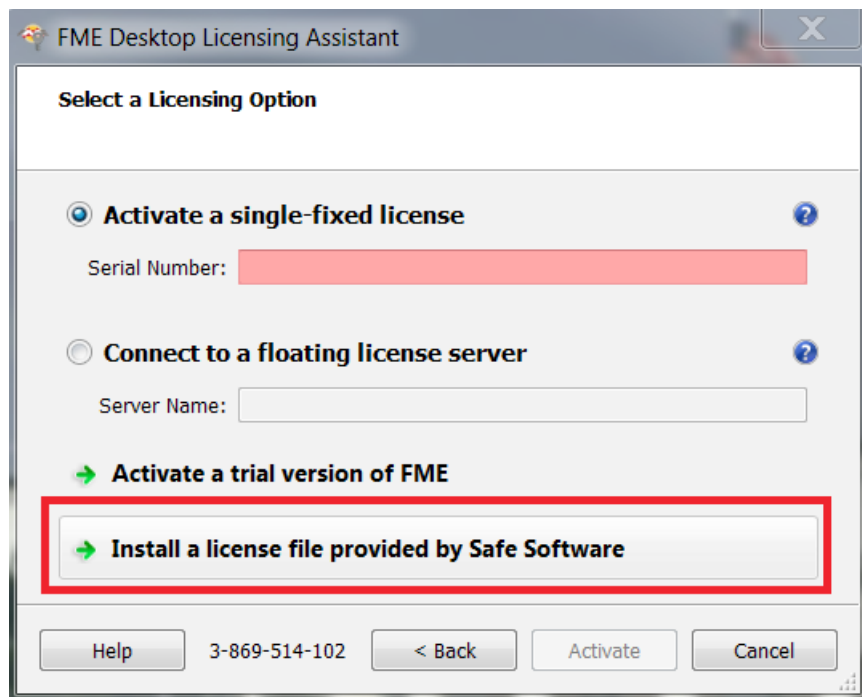


Please email the registration code to support@sterlinggeo.com and we will generate the appropriate license and return this to you.



REGISTER FME

Once you have the license file, reopen the Licensing Wizard and click on the Install a license file provided by Safe Software as below.



Having clicked through to the locate license screen, click on the button to the right of the dialogue indicated below. Navigate to the location of the license file and select it. Having done that, click on 'Activate' at the bottom of the dialogue. This will activate the license and FME Workbench and Data Inspector will both be available for use.

